

EX-7 series

HITACHI

Reliable Solutions

EX5600

Hitachi Construction Machinery Group

LANDCROS

Japanese Excellence—Reliable Solutions



HYDRAULIC EXCAVATOR

Model Code: EX5600-7 FCO* Specification
Engine Rated Power: Cummins: 2 x 1 119 kW (1 520 PS, 1 500 HP)
MTU: 2 x 1 150 kW (1 563 PS, 1 542 HP)
Operating Weight: Cummins Loading Shovel: 544 000 kg (1 200 000 lb.)
Backhoe: 550 000 kg (1 210 000 lb.)
MTU Loading Shovel: 549 000 kg (1 210 000 lb.)
Backhoe: 555 000 kg (1 220 000 lb.)
Bucket: Loading Shovel: ISO 7546:1983 Heaped 2:1
: 29.0 – 31.0 m³ (37.9 – 40.5 cu. yd.)
Backhoe: ISO 7451:2007
: 36.0 – 38.5 m³ (47.1 – 50.4 cu. yd.)

Model Code: EX5600-7 Tier 4 Final / EU Stage V** Specification
Engine Rated Power: Cummins: 2 x 1 119 kW (1 520 PS, 1 500 HP)
MTU: 2 x 1 150 kW (1 563 PS, 1 542 HP)
Operating Weight: Cummins Loading Shovel: 548 000 kg (1 200 000 lb.)
Backhoe: 554 000 kg (1 220 000 lb.)
MTU Loading Shovel: 551 000 kg (1 210 000 lb.)
Backhoe: 557 000 kg (1 230 000 lb.)
Bucket: Loading Shovel: ISO 7546:1983 Heaped 2:1
: 29.0 – 31.0 m³ (37.9 – 40.5 cu. yd.)
Backhoe: ISO 7451:2007
: 36.0 – 38.5 m³ (47.1 – 50.4 cu. yd.)

Model Code: EX5600-7 Electric Drive Specification
Power Output: 2 x 860 kW (1 169 PS, 1 153 HP)
Operating Weight: Loading Shovel: 527 000 kg (1 160 000 lb.)
Backhoe: 531 000 kg (1 170 000 lb.)
Bucket: Loading Shovel: ISO 7546:1983 Heaped 2:1
: 29.0 – 31.0 m³ (37.9 – 40.5 cu. yd.)
Backhoe: ISO 7451:2007
: 36.0 – 38.5 m³ (47.1 – 50.4 cu. yd.)

* FCO: Fuel Consumption Optimization

** EU Stage V specification is only available for Cummins engine

Introducing the **EX5600-7**

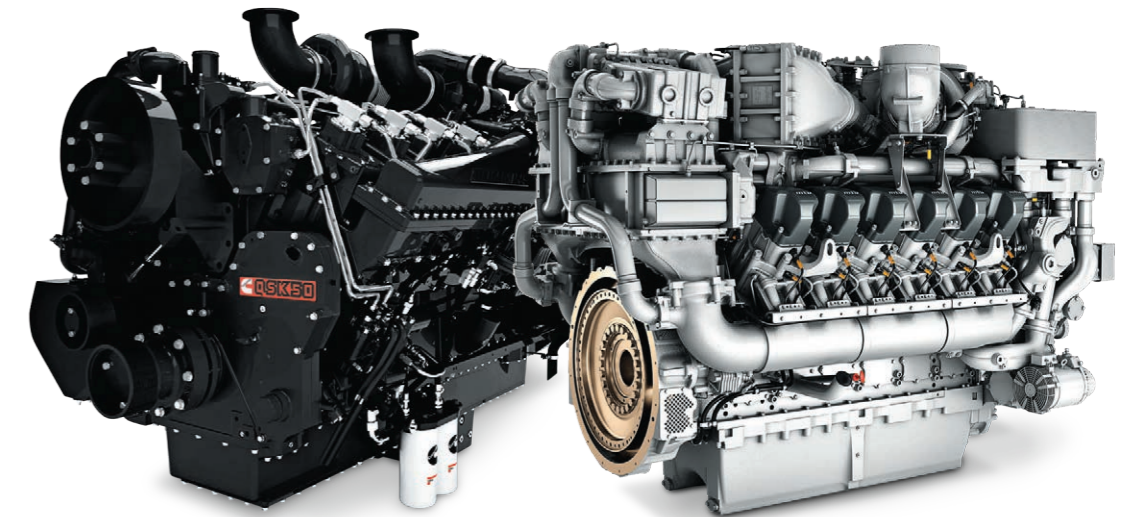
The Hitachi Construction Machinery EX-7 series is born from sheer engineering excellence, balancing innovation with proven design to deliver reliable and efficient excavators.*

Prioritizing simplified maintenance and operator comfort, Hitachi Construction Machinery offers a powerful, durable solution for all mining operations.

Incorporating the latest technologies, systems and safety features, the EX5600-7 can be relied upon to maximize productivity in challenging mining conditions.



*All EX-7 series excavators consume less fuel than the EX-6 series and the electric motor option has zero diesel exhaust emissions.



DIESEL DRIVE

EX5600-7 FCO SPECIFICATION

The model is equipped with a Cummins or MTU FCO* (Non-Certified) engine that optimizes fuel consumption.

CUMMINS

Cummins QSK50, 2 x 1 119 kW (1 520 PS, 1 500 HP)

MTU

MTU 12V4000 C33R, 2 x 1 150 kW (1 563 PS, 1 542 HP)

*FCO: Fuel Consumption Optimization

ELECTRIC DRIVE

EX5600-7 TIER 4 FINAL / EURO STAGE V SPECIFICATION

The model is equipped with a US EPA Tier 4 Final / EU Stage V emission regulations-compliant Cummins or MTU engine.**

CUMMINS

Cummins QSK50 with SCR (Selective Catalytic Reduction) after-treatment system, 2 x 1 119 kW (1 520 PS, 1 500 HP)

MTU

MTU 12V4000 C15, 2 x 1 150 kW (1 563 PS, 1 542 HP)

**EU Stage V specification is only available for Cummins engine

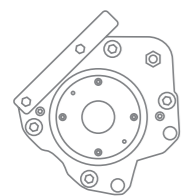
EX5600-7 ELECTRIC DRIVE SPECIFICATION

The electric excavator utilizes the Hitachi AC electric motor without the diesel exhaust emissions.

HITACHI ELECTRIC MOTOR

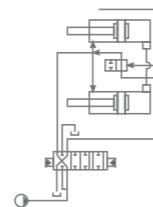
Hitachi TFOA-KK, 2 x 860 kW (1 169 PS, 1 153 HP)
 · 50 Hz, 6 000 V, 6 600 V†
 · 60 Hz, 6 600 V, 6 900 V†
 · 60 Hz, 7 200 V†

†Please contact Hitachi Construction Machinery for other specification request



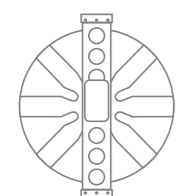
MAIN PUMP ELECTRIC REGULATORS

Individually controlled hydraulic pumps utilize an electric regulator on each main pump, optimizing engine power and lowering fuel consumption to deliver a more efficient performance.



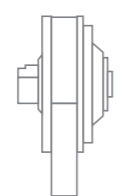
HYDRAULIC REGENERATION CIRCUIT

The new flow regeneration valve fitted to the hydraulic system reduces hydraulic pump demand ultimately reducing the power requirements from the hydraulic system and engine, lowering fuel consumption and improving pump life.



HYDRAULIC OIL COOLER FAN

Redesigned hydraulic oil cooler with variable speed fan requires less power to cool hydraulic oil, resulting in a more reliable hydraulic system with reduced energy demand.



RADIATOR FAN CLUTCH

The radiator fan clutch and variable speed fan are specifically tailored to the engine cooling requirement, resulting in an optimal cooling system with reduced engine horsepower demand and the added benefit of lowering operation noise.

Designed for SUSTAINABILITY

The Hitachi Construction Machinery EX-7 series utilizes the latest advancements in engine and energy optimization technologies to deliver a customized and sustainable machine, providing a significant reduction in fuel consumption without compromising productivity.

The EX5600-7 offers a selection of engine models – including the choice of emission configurations to meet regulatory requirements – combined with new electronically-controlled hydraulic pumps, optimized cooling package and enhanced hydraulic circuits, to achieve greater performance and efficiency.‡

‡compared to EX5600-6

Designed for **PRODUCTIVITY**

Engineered from the ground up with advanced technologies to maximize productivity, the EX5600-7 can be relied upon in tough mining conditions.

Embracing the Hitachi Construction Machinery design philosophy of balanced reliability and performance, the EX5600-7 delivers exceptional power and force while offering consistent and dependable digging power for around-the-clock performance.

EX5600-7

DESIGNED FOR MAXIMUM DUMP TRUCK MATCHING

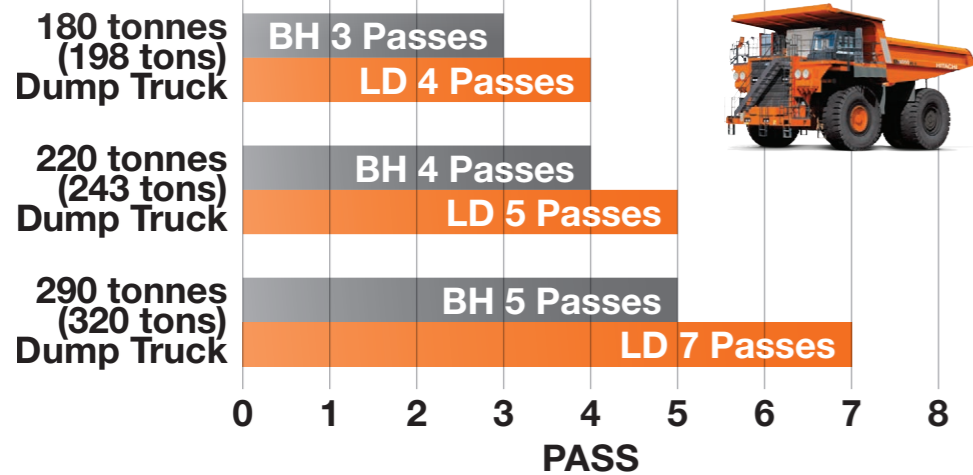
Achieve efficient production by selecting the optimal bucket type, size and wear package for your operation.

By matching the bucket size on your EX5600-7 to the capacity of its partner dump truck and the material being loaded, you can achieve efficient operation with faster loading and fewer passes.

The EX5600-7 excavator with the new Hitachi Construction Machinery Genuine Bucket Lineup is optimally matched to 180–290 tonnes (198–320 tons) class dump trucks.



Backhoe (BH)
36.0 m³ (47.1 cu. yd.)
 Loading Shovel (LD)
29.0 m³ (37.9 cu. yd.)





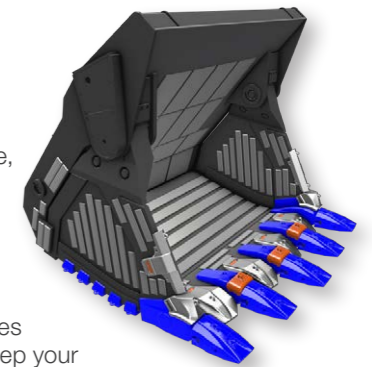
Designed for **LONGEVITY**

The Hitachi Construction Machinery Genuine Bucket Lineup is specifically designed to strike a balance between productivity, reliability and safety. The bucket design also considers the loads on the boom, arm and main frame structure.

With more bucket choice, Hitachi Construction Machinery EX-7 mining excavators can perform better even in tough mining applications.

ABRASION RESISTANT MATERIAL

Informed by extensive experience, Hitachi Construction Machinery provides the most suitable bucket wear packages that attach securely to protect excavator buckets from highly abrasive materials. Wear packages reduce maintenance time and keep your operation productive.



BRADKEN ECLIPSE GET SYSTEM

Each bucket type in the new Hitachi Construction Machinery Genuine Bucket Lineup is equipped with the Bradken high quality GET system to reduce maintenance time and improve production efficiency. The GET is designed to match a wide range of applications with abrasion-resistant material attachment position specifications for each bucket to match digging conditions ranging from easy through to abrasive, hard, and blocky.



KEY BENEFITS

Fast and safer installation with hammer-free installation of the point and locking pin.

Increased machine production and longer life from improved point styles.

Reduced total cost of ownership due to less maintenance and change-outs required.

HITACHI CONSTRUCTION MACHINERY GENUINE BUCKET LINEUP

Hitachi Construction Machinery Genuine Buckets with Bradken GET system are classified into 3 types according to the density and characteristics of the material they are designed for:



1. GENERAL PURPOSE (GP)

Suitable for material up to loose density 1 800 kg/m³ (3 034 lb./cu. yd.). This bucket is mainly designed for materials with small grain sizes found in topsoil removal and well-blasted overburden.

2. LIGHT DUTY (LT)

Suitable for material up to loose density 1 600 kg/m³ (2 697 lb./cu. yd.). This bucket is fitted with structures designed for digging and loading materials with a lighter material density.

3. HEAVY DUTY (HD)

Suitable for material up to loose density 1 800 kg/m³ (3 034 lb./cu. yd.). To prevent damage to the bucket structure even in tough mining conditions, Hitachi Construction Machinery offers the most suitable wear package for buckets used for these materials.

Designed for SAFETY

At Hitachi Construction Machinery, safety is paramount, that's why safety is a major priority in the new EX-7 series excavators.

Designed and built with improved pathways and handrails, the layout of the EX5600-7 provides for a safer and more maintainable machine. The addition of an on-board inclinometer and the dual isolator switch as standard, deliver a safer working environment.



ACCESS AND WALKWAYS

Anti-slip walkways and specially designed handrails reduce the risk of tripping when maneuvering around the machine and provide ease of access for operators and maintenance personnel.

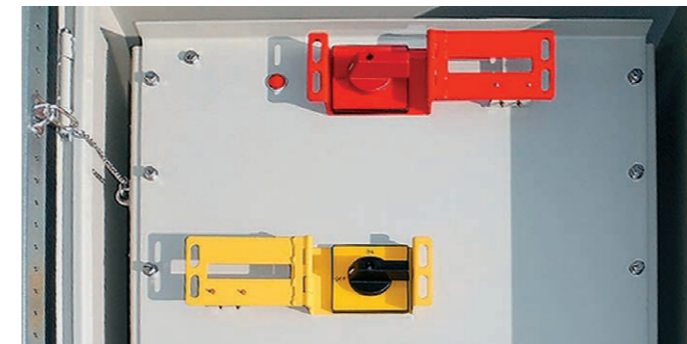
Wide, low-gradient, non-slip, hydraulic folding stairs allow for easy and safer access to the machine.



Aerial Angle (OPTIONAL)

Aerial Angle provides the operator with a 360° live view around their excavator. Cameras strategically mounted on the machine generate a single aerial view of the EX5600-7 surroundings.

Multiple screen display options can be selected on the cab's 12-inch Aerial Angle monitor for ease of operation.



DUAL ISOLATOR SWITCH

The conveniently located dual isolator switch provides the option to deactivate the engine and battery individually.

When inspections and maintenance are required, the battery isolator provides the benefit of isolating both the positive and negative terminals of the battery to provide a safe working environment. The engine isolator deactivates the engine starter motor, while allowing battery power to the electric system for troubleshooting to enhance safety and maintainability.



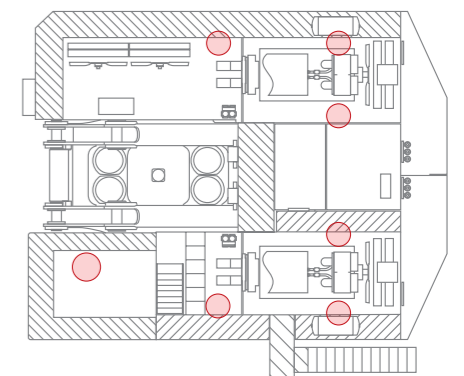
ON BOARD INCLINOMETER

The on-board inclinometer assists the operator to work within the safe limits of the machine for optimal performance, with two predetermined safety limits providing extra assurance and confidence. If the first safety limit is exceeded, the operator receives a visual alert prompting them to take corrective action. The alert escalates to an audible alarm if the second safety limit is breached.



EMERGENCY ESCAPE CHUTE

An escape chute has been added to the side of the cab for use in an emergency. The chute allows evacuees to descend vertically down from the machine, providing a safe and fast route of escape when all other means of exit are blocked.



ENGINE STOP SWITCHES

Engine stop switches have been placed in easily accessible areas: four in the engine room, one in the pump room, one in the oil cooler room, and one emergency stop switch in the cab.

OPERATOR CABIN

The use of tinted laminated windows to reduce heat, glare and harmful UV rays – and the sound-suppressed cab – further enhance the ergonomic environment, improving operator comfort. OPG top guard level II compliant with ISO 10262:1998 provides secure protection from falling objects, ensuring operator safety.



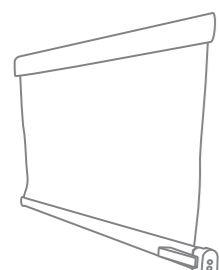
Designed for OPERATOR COMFORT

The EX5600-7 cabin is designed for a comfortable and seamless operating experience. The ergonomic layout, electronic joysticks, intelligent Multi-Display, air suspension seat and advanced climate control system provide an operating environment conducive to less fatigue and enhanced operator productivity.



MULTI-FUNCTIONAL DISPLAY

Fitted with an LED back-light to improve clarity and reduce glare, the multi-functional display provides key machine information and performance indicators through use of an integrated dial switch interface.



ROLL SCREENS

Retractable front and side roll screens provide a more comfortable working environment, protecting the operator from sun glare. Reduced heat buildup in the cab improves the efficiency of the climate-controlled air conditioner resulting in a more enhanced operating environment.



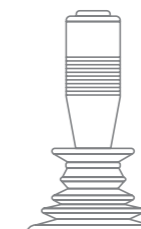
CLIMATE CONTROLLED AIR CONDITIONING

The climate-controlled air conditioning within the pressurized cab helps overcome environmental extremes. Optimized filtering of interior and exterior air combined with the new flexi-vent system provides a more personalized and balanced environment to meet the demands of the operator.



OPERATOR SEAT

Specifically designed for use in the mining industry, the automatic weight-adjusting air suspension seat determines the optimal cushioning effect to match the operator's weight, enhancing comfort and minimizing vibration.



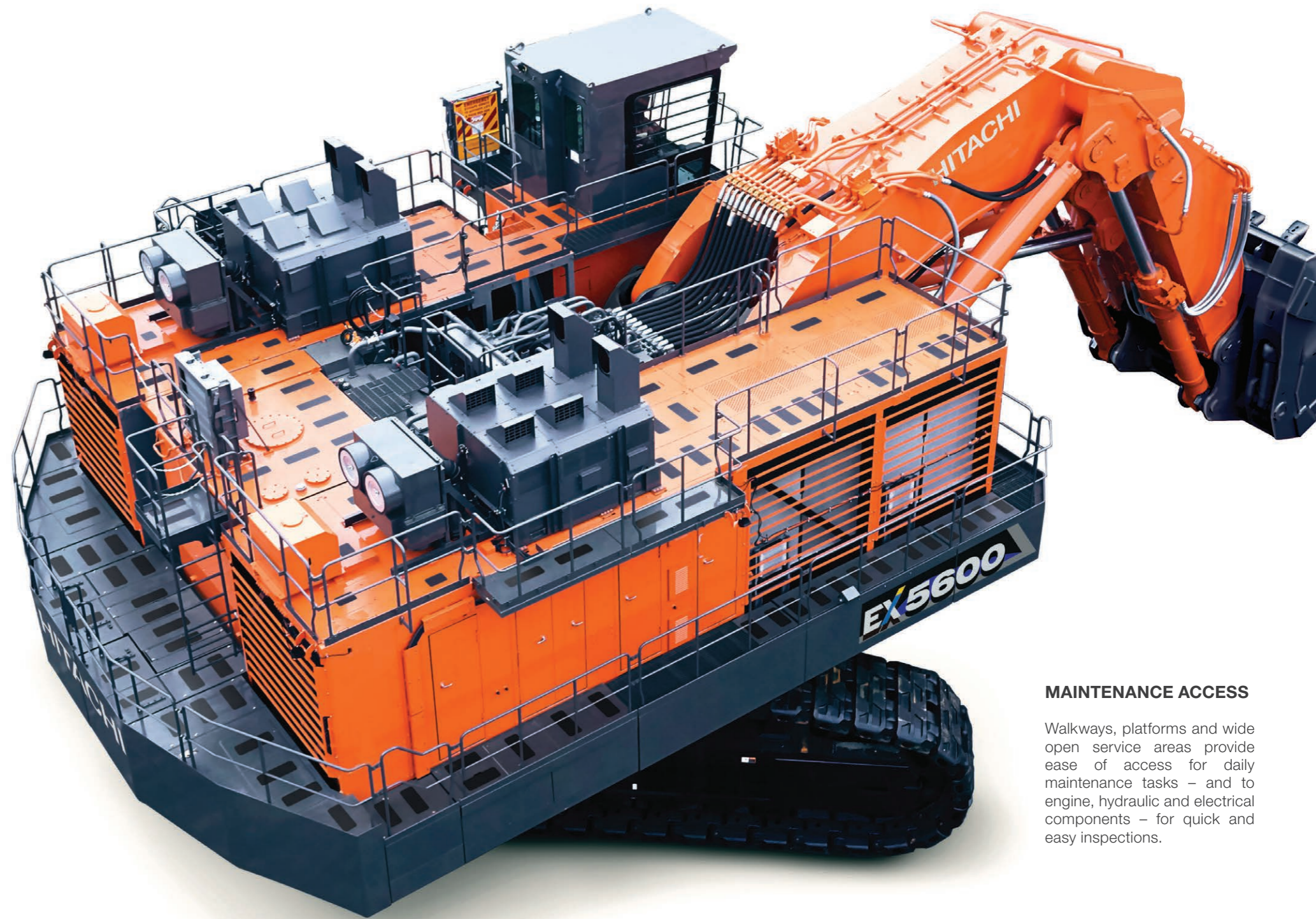
ELECTRONIC JOYSTICKS

Connected to the machine's microprocessor, the integrated electronic joysticks enable precise and almost effortless operation, minimizing operator fatigue and improving operational performance.

Designed for **EASE OF MAINTENANCE**

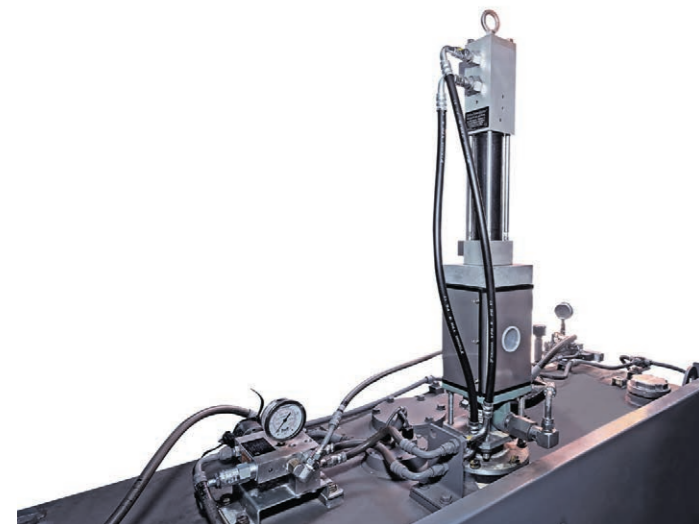
Hitachi Construction Machinery's unique modular design, spacious passageways and work platforms provide clear access for daily maintenance requirements and major component inspections, resulting in safer and simplified maintenance.

The addition of several new innovative features improve the serviceability of the EX5600-7, reinforcing the ease of maintenance that customers have come to expect from Hitachi Construction Machinery.



MAINTENANCE ACCESS

Walkways, platforms and wide open service areas provide ease of access for daily maintenance tasks – and to engine, hydraulic and electrical components – for quick and easy inspections.

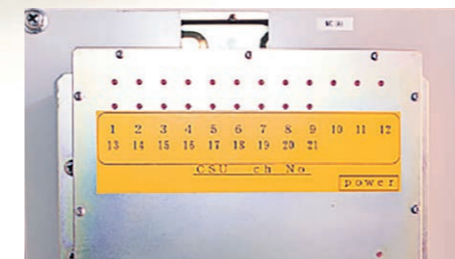
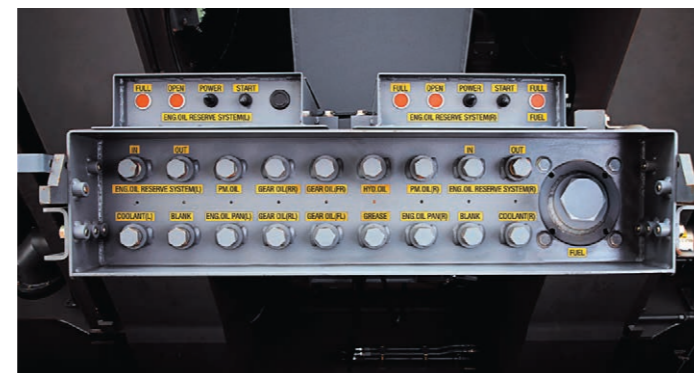


AUTO-LUBRICATING SYSTEM

Advanced, redesigned auto-lubrication system comes with a 673 L (177.8 gal.) large capacity grease tank, new grease pump, in-line grease filter, breather with filter, grease level indicator in the cab and a provision for fitment of a second grease pump in the lubrication tank, providing a more reliable system for more uptime.

CENTRALIZED LUBRICATION SYSTEM

The centralized fast-filling system provides easy access from the ground to refill and evacuate lubricants, water, grease and fuel. The fast-filling system can be fitted with an optional quick coupler.



CONTAMINATION SENSORS

Contamination sensors are located on all main hydraulic pumps to detect any contaminants that may cause damage to the hydraulic system. The sensors alert the operator of potential contaminants and also record the fault code in the Data Logging Unit (DLU) with the capability to remotely advise maintenance personnel.

LUBRICATION PIPING COVER

A swing circle cover has been added to the outside of the swing bearing, protecting the lubrication piping from debris damage.



GREASE-LESS CENTER JOINT

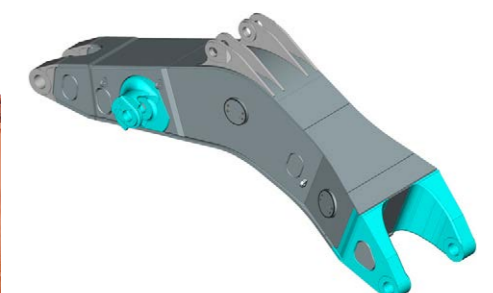
The redesigned center joint is self-lubricating, utilizing the machine's hydraulic oil, reducing the need for daily maintenance.



Designed for **DURABILITY**

Designed, built and engineered for the mining industry, Hitachi Construction Machinery's EX-7 series excavators offer a productive, reliable solution built to last under tough conditions.

From the rigid box design to the 3D computer assisted FEA analysis, the EX5600-7 utilizes proven engineering philosophies to deliver a more durable machine.

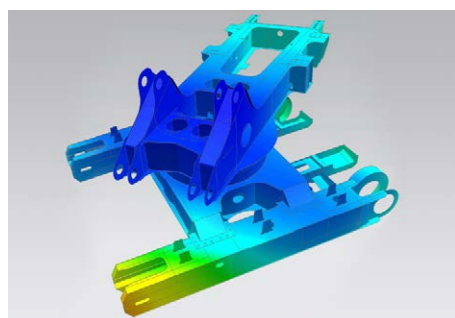


ACCESS HOLES WITH BOLT-ON COVERS

The EX5600-7 boom features internal access holes with bolt-on covers on each section of the bulkhead, providing quicker and easier inspection for internal cracks. By eliminating the need for gouging and welding, this new design significantly reduces machine downtime.

ENHANCED BOOM & ARM DURABILITY

Additional steel casting thickness on the center boss and foot of the new EX5600-7 boom provides greater durability, ensuring a longer service life. (In the image above the parts where the steel casting is applied are marked in blue.) The arm has been strengthened by changing the structure of the cylinder boss section.



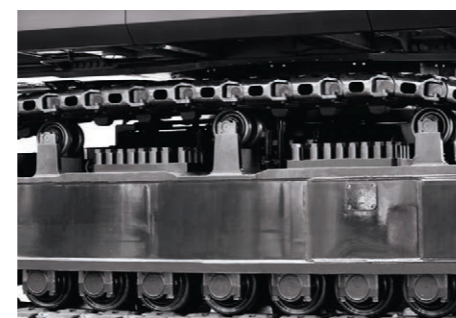
RIGID BOX DESIGN

Computer-assisted analysis is used to determine the most effective design for frame longevity to withstand the demands of the mining operation.



CENTER TRACK FRAME

Hitachi Construction Machinery's exclusive center track frame delivers optimal stress dispersion through the use of specifically designed castings to reduce welds in critical high-stress areas, ensuring a stronger frame with improved durability and reliability.



UPPER ROLLERS

The EX5600-7 undercarriage has three double-sided pedestal-designed upper rollers on each side of the track frame to maintain track shoe clearance and provide protection from debris buildup, reducing shoe and roller wear for a more reliable solution.



OIL FILLED ROLLERS & IDLERS

The oil-filled idlers – and upper and lower rollers – eliminate the need for daily lubrication, helping reduce maintenance costs.



TRACK SHOES

The proven Hitachi Construction Machinery patented track shoe design has been applied to mitigate premature wear of the drive-lugs. Each shoe is induction hardened utilizing Hitachi Construction Machinery's unique processes to deliver a superior and more durable solution.



CENTER FRAME UNDERGUARD (OPTIONAL)

The newly designed heavy duty guard protects hoses and accumulators located in the track center frame from rocks and debris ingress, providing extra protection and reliability.



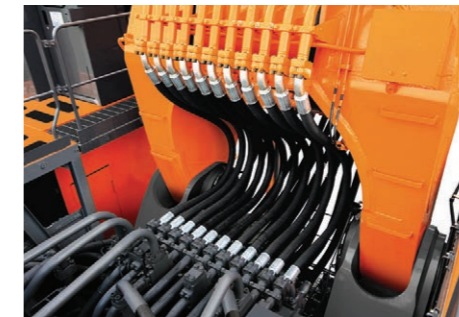
ELECTRONIC CYLINDER STROKE CONTROL

The new on-board electronic controller receives signals from angle sensors fitted to the boom and arm to control the pump flow rate and cylinder speed, reducing the shock at the stroke end of the cylinder cycle. This new feature improves operator comfort and reduces the impact on the cylinders and structures, increasing reliability and productivity.



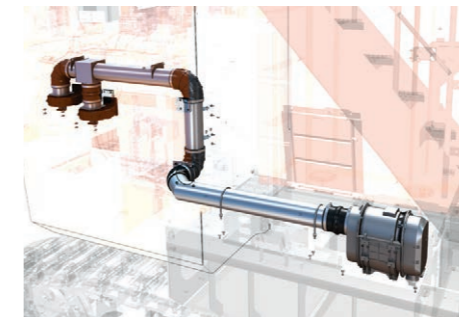
Designed for
RELIABILITY

Evolving from years of operational experience and engineering excellence, the Hitachi Construction Machinery EX-7 series of excavators continues to drive innovation in the mining industry. Advanced technology, enhanced durability, improved safety features and operational performance all combine to make the new EX5600-7 a more reliable mining solution.



FRONT ATTACHMENT HOSES

Hitachi Construction Machinery's hose design is based on a cyclic fatigue rate to maximize longevity and improve safety. Front attachment hoses have also been rearranged from the traditional arch style to an underslung configuration, removing the need for clamping, reducing chafing and increasing reliability.



CAB RISER PRESSURIZER

A pressurizer system has been introduced to the cab riser to reduce dust infiltration, maximizing the service life of the electronic components and devices located within.



SOLID CONDUIT WIRE HARNESES

The introduction of solid conduit harnesses and junction boxes prevents dust and moisture ingress, improving longevity. Electrical harnesses between junction boxes can be replaced individually, ultimately reducing maintenance time and cost.



OPERATING LIGHTS

Strategically placed long-life LED working lights provide greater longevity and reliability in night operations.

Designed for MACHINE CONDITION MONITORING

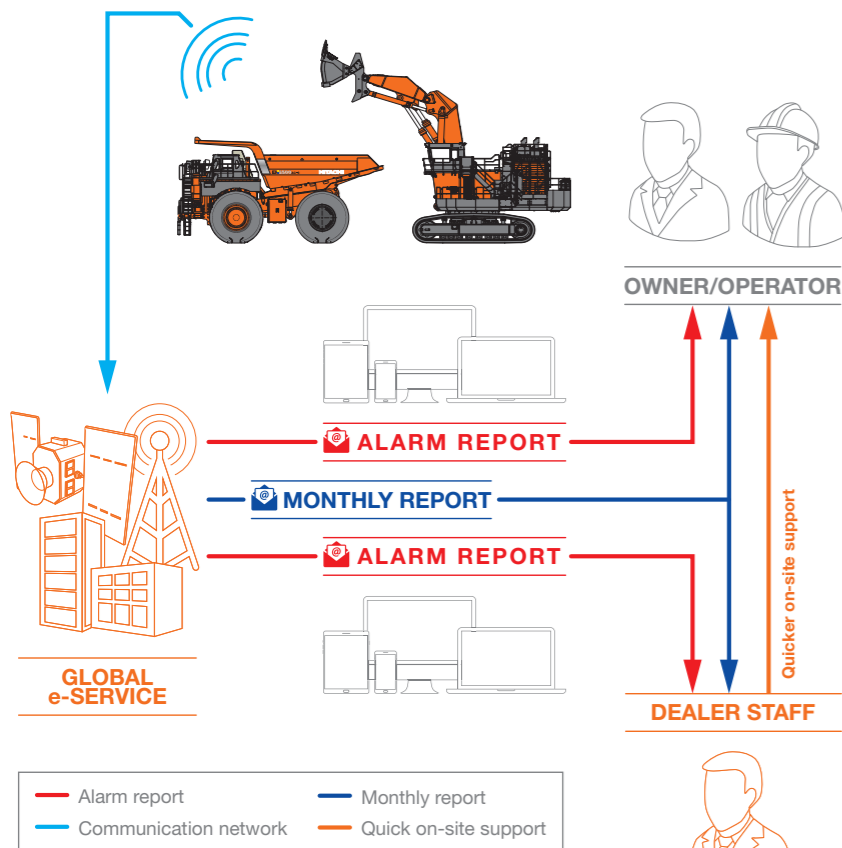


ConSite Mine allows mine sites to remotely monitor compatible excavators (including the EX5600-7) and dump trucks 24/7 using IoT and AI analysis of the equipment's operational data.

The technology sends two kinds of status reports to customers and their dealers via email or the ConSite Mine Shot smartphone app:

- Monthly Reports – updates on the machine's operational data each month, and
- Alarm Reports – immediate notifications when abnormalities are detected that may require urgent attention.

ConSite Mine provides greater value to customers by improving safety and productivity, reducing lifecycle costs and minimizing the downtime of machinery. Rather than using the rough measure of operational time to predict when to perform maintenance, ConSite Mine allows mine sites to check analysis results in the reports it sends to then perform maintenance, inspection, and parts replacement at the appropriate time according to the status of the mining machinery itself.

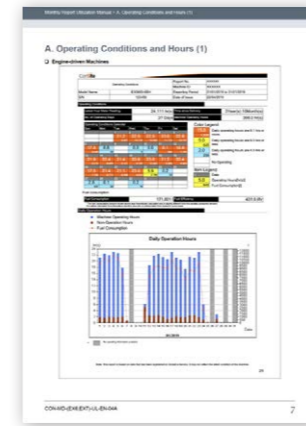


Warning
The data report service is available on machines equipped with the communication terminal. Contact your Hitachi Construction Machinery authorized dealer for the details of Data Report Service and machine models that are supported. The communication ability may depend on the situation of the worksite. Please confirm if your machine is currently communicating before beginning this service. Under no circumstances shall Hitachi Construction Machinery and/or Subsidiaries and its Dealer be held responsible or liable for any communication line failure, interruption, delay in operation or transmission or any other cause of action.

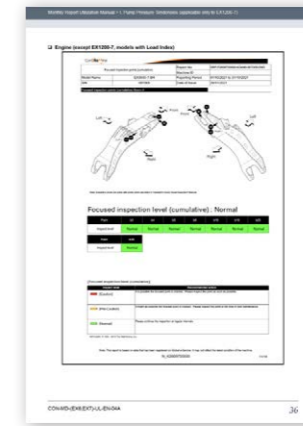


DATA REPORT SERVICE MONITOR YOUR MACHINES CLOSELY WITH CONSITE MINE

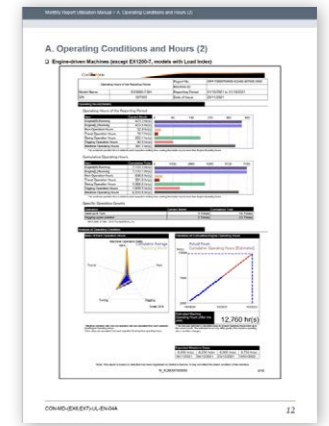
FUEL CONSUMPTION REPORT



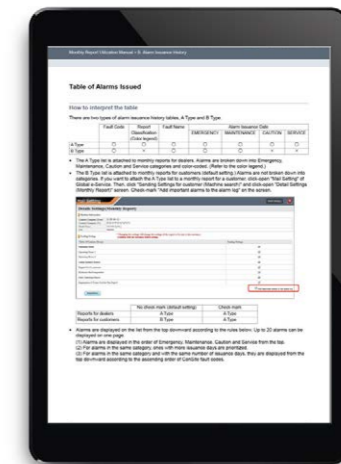
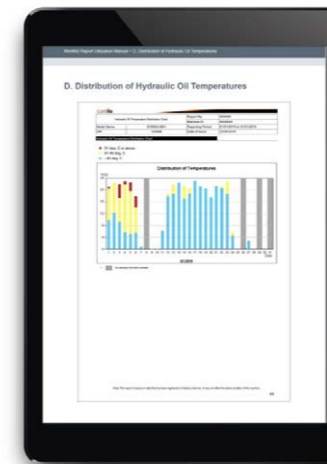
LOAD INDEX REPORT



OPERATION RATE REPORT



MONTHLY REPORT



ALARM REPORT

A detailed report of the operational status for each machine will be sent to the registered email addresses or via the ConSite Pocket app every month.

BENEFITS:

1. Monthly operational information helps you to analyze the operational efficiency of your machine and improve overall machine-operation status.
2. Each machine's operational information can be shared with Hitachi Construction Machinery authorized dealers, enabling stable operation for your machine.

KEY ITEMS INCLUDED IN THE REPORT:

- Fuel consumption
- Eco operation
- Load Index
- Operation rate
- Hydraulic oil temperature
- Non operation time
- Engine coolant temperature

If an issue is detected and requires urgent attention to prevent downtime, an emergency alarm report will be sent to the registered email addresses or via the ConSite Pocket app.

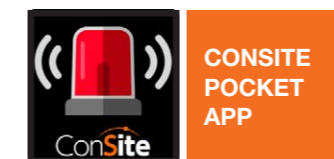
BENEFITS:

1. Information about an alarm requiring urgent attention can be shared by the operator and owner so that the necessary measures can be taken.
2. Alarm information can be shared with your dealer as well to enable smoother coordination and reduce your machine's downtime.

KEY ITEMS INCLUDED IN THE REPORT:

- Model name / serial number
- Recommended action
- Hour meter
- Position
- Alarm code / name

Reports can be viewed on laptops, desktop computers, smartphones and tablets.



The ConSite Pocket app works with ConSite Mine and our Global e-Service machine condition management system.



SPECIFICATIONS

ENGINE

Model	Cummins QSKTA50-CE (FCO, T4F/EU Stage V)
Rated power @1 800 min ⁻¹ (rpm)	2 x 1 119 kW (1 520 PS, 1 500 HP)
ISO 14396:2002, gross...	2 x 1 119 kW (1 520 PS, 1 500 HP)
Piston displacement	2 x 50.0 L (3 051 cu. in.)
Model	MTU 12V4000 C33R (FCO)
Rated power @1 800 min ⁻¹ (rpm)	2 x 1 150 kW (1 563 PS, 1 542 HP)
ISO 14396:2002, gross...	2 x 1 150 kW (1 563 PS, 1 542 HP)
Piston displacement	2 x 57.2 L (3 491 cu. in.)
Model	MTU 12V4000 C15 (T4F)
Rated power @1 800 min ⁻¹ (rpm)	2 x 1 150 kW (1 563 PS, 1 542 HP)
ISO 14396:2002, gross...	2 x 1 150 kW (1 563 PS, 1 542 HP)
Piston displacement	2 x 57.2 L (3 491 cu. in.)

ELECTRIC MOTOR

Model	Hitachi TFOA-KK
Power output	2 x 860 kW (1 169 PS, 1 153 HP)
	· 50 Hz, 6 000 V, 6 600 V* @ 1 500 min ⁻¹ (rpm)
	· 60 Hz, 6 600 V, 6 900 V* @ 1 800 min ⁻¹ (rpm)
	· 60 Hz, 7 200 V* @ 1 800 min ⁻¹ (rpm)
	*Please contact Hitachi Construction Machinery for other specification request

HYDRAULIC SYSTEM

Main Pumps	8 variable-displacement, axial piston pumps for front attachment, travel and swing
Pressure setting	29.4 MPa (300 kgf/cm ² , 4 264 psi)
	8 x 375 L/min (99.1 gal./min)
Max. oil flow	4 x 425 L/min (112.3 gal./min)

UPPER STRUCTURE

Swing speed	3.3 min ⁻¹ (rpm)
Fuel tank capacity	11 300 L (2 486 gal.)
DEF tank capacity (Cummins T4F only)	356 L (78.3 gal.)

UNDERCARRIAGE

Travel speeds	High : 0 to 2.3 km/h (0 to 1.4 mph)
	Low : 0 to 1.6 km/h (0 to 1.0 mph)
Maximum traction force	2 230 kN (227 000 kgf, 501 000 lbf)

WEIGHTS AND GROUND PRESSURE

Loading Shovel

Equipped with 29.0 m³ (38.0 cu. yd.) (ISO 7546:1983 Heaped 2:1) bottom dump bucket

Shoe Width	Weight	Ground Pressure
1 400 mm (55.0 in.)	544 000 kg (1 200 000 lb.)	244 kPa (2.49 kgf/cm ² , 35.4 psi)

Backhoe

Equipped with 34.0 m³ (44.5 cu. yd.) (ISO 7451:2007) bucket

Shoe Width	Weight	Ground Pressure
1 400 mm (55.0 in.)	550 000 kg (1 210 000 lb.)	246 kPa (2.51 kgf/cm ² , 35.7 psi)

Cummins T4F configuration

ENVIRONMENT

Auto control air conditioner contains fluorinated greenhouse gases.
Refrigerant type: HFC-134a
GWP: 1430
Amount: 2.85 kg (6.3 lb.)
CO₂e: 4.08 tonnes (4.50 tons)

HITACHI CONSTRUCTION MACHINERY GENUINE BUCKET LINEUP

Backhoe Buckets

Type	Capacity (ISO 7451:2007)	Material Density	Cutting Width	Weight	GET System
General Purpose	36.0 m ³ (47.1 cu. yd.)	1 800 kg/m ³ (3 034 lb./cu. yd.)	4 860 mm (15 ft. 11 in.)	38 400 kg (84 700 lb.)	Bradken Eclipse
Light Duty	38.5 m ³ (50.4 cu. yd.)	1 600 kg/m ³ (2 697 lb./cu. yd.)	4 860 mm (15 ft. 11 in.)	39 500 kg (87 100 lb.)	Bradken Eclipse
Heavy Duty	36.0 m ³ (47.1 cu. yd.)	1 800 kg/m ³ (3 034 lb./cu. yd.)	4 860 mm (15 ft. 11 in.)	39 400 kg (86 900 lb.)	Bradken Eclipse

Loading Shovel Buckets

Type	Capacity (ISO 7546:1983 Heaped 2:1)	Material Density	Cutting Width	Weight	GET System
General Purpose	29.0 m ³ (37.9 cu. yd.)	1 800 kg/m ³ (3 034 lb./cu. yd.)	4 860 mm (15 ft. 11 in.)	46 700 kg (103 000 lb.)	Bradken Eclipse
Light Duty	31.0 m ³ (40.5 cu. yd.)	1 600 kg/m ³ (2 697 lb./cu. yd.)	4 860 mm (15 ft. 11 in.)	48 100 kg (106 000 lb.)	Bradken Eclipse
Heavy Duty	29.0 m ³ (37.9 cu. yd.)	1 800 kg/m ³ (3 034 lb./cu. yd.)	4 860 mm (15 ft. 11 in.)	47 200 kg (104 000 lb.)	Bradken Eclipse

Please contact your Hitachi Construction Machinery dealer for information about other bucket types, their capacity and/or material densities.

PASS MATCH

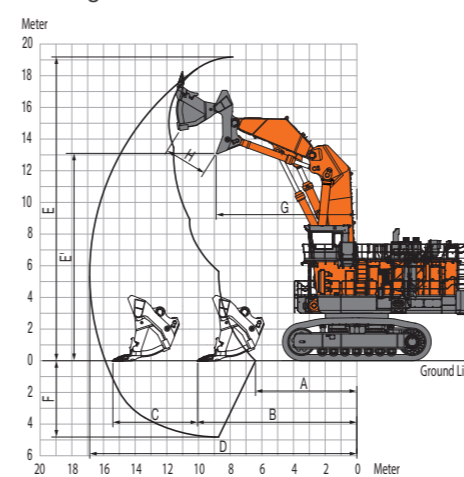
Best match: 4–6 passes

Potential match: 3–8 passes

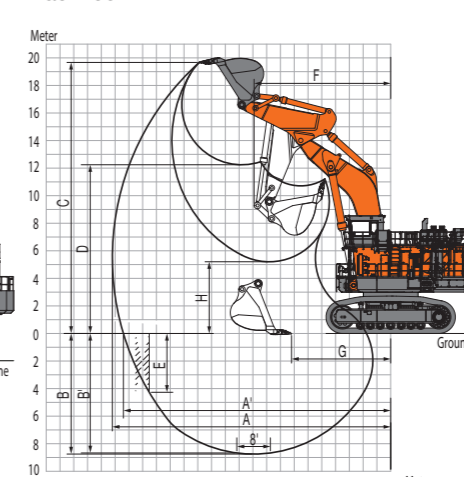
Model	100 tonne (110 tons) Class Truck	140 tonne (154 tons) Class Truck	180 tonne (198 tons) Class Truck (EH3500AC-3)	220 tonne (243 tons) Class Truck (EH4000AC-3)	290 tonne (320 tons) Class Truck (EH5000AC-3)
EX2600-7	BH 18.0 m ³ (23.5 cu. yd.)	3	5	6	
	LD 15.0 m ³ (19.6 cu. yd.)	4	6	8	
EX3600-7	BH 22.0 m ³ (28.8 cu. yd.)	3	4	5	6
	LD 22.0 m ³ (28.8 cu. yd.)	3	4	5	7
EX5600-7	BH 36.0 m ³ (47.1 cu. yd.)			3	4
	LD 29.0 m ³ (37.9 cu. yd.)		3	4	5

WORKING RANGES

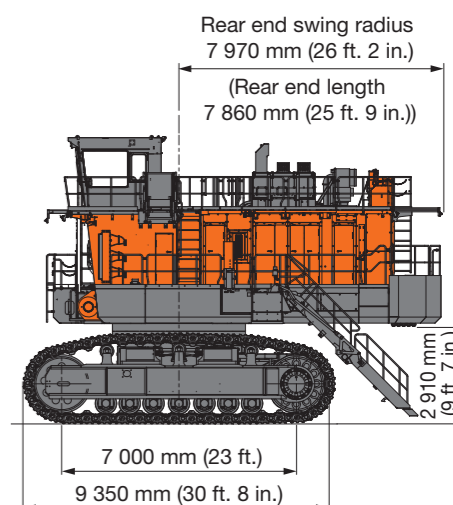
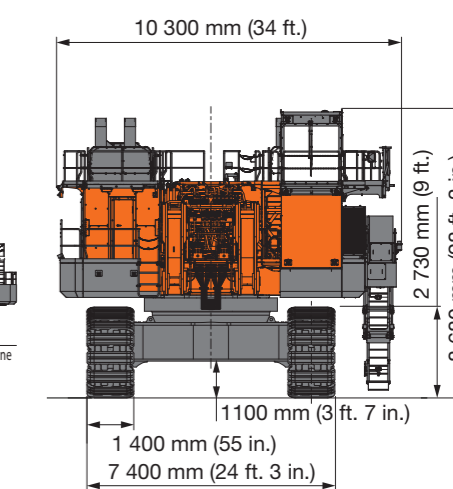
Loading Shovel



Backhoe



DIMENSIONS



Bucket Capacity (ISO 7546:1983 Heaped 2:1)	27.0 m ³ (35.3 cu. yd.)
A Minimum Digging Distance	6 580 mm (21 ft. 7 in.)
B Minimum Level Crowding Distance	10 100 mm (33 ft. 2 in.)
C Level Crowding Distance	5 310 mm (17 ft. 5 in.)
D Maximum Digging Reach	16 900 mm (55 ft. 5 in.)
E Maximum Cutting Height	19 200 mm (63 ft.)
E' Maximum Dumping Height	13 100 mm (43 ft.)
F Maximum Digging Depth	4 850 mm (15 ft. 11 in.)
G Working Radius at Maximum Dumping Height	8 900 mm (29 ft. 2 in.)
H Maximum Bucket Opening Width	2 700 mm (8 ft. 10 in.)
Arm Crowding Force On Ground*	1 520 kN (155 000 kgf, 342 000 lbf)
Bucket Digging Force*	1 630 kN (166 000 kgf, 366 000 lbf)

Boom Length	10.1 m (33 ft. 2 in.)
Arm Length	5.0 m (16 ft. 5 in.)
Bucket Capacity (ISO 7451:2007)	34.0 m ³ (44.5 cu. yd.)
A Maximum Digging Reach	20 200 mm (66 ft. 3 in.)
A' Maximum Digging Reach (on ground)	19 300 mm (63 ft. 4 in.)
B Maximum Digging Depth	8 700 mm (28 ft. 7 in.)
B' Maximum Digging Depth (2.5 m (8 ft. 2 in.) level)	8 610 mm (28 ft. 3 in.)
C Maximum Cutting Height	19 700 mm (64 ft. 8 in.)
D Maximum Dumping Height	12 300 mm (40 ft. 4 in.)
D' Minimum Dumping Height	5 260 mm (17 ft. 3 in.)
E Minimum Swing Radius	9 920 mm (32 ft. 7 in.)
F Maximum Vertical Wall	3 570 mm (11 ft. 9 in.)
G Minimum Level Crowding Distance	7 410 mm (24 ft. 4 in.)
Bucket Digging Force* (ISO 6015:2006)	1 490 kN (152 000 kgf, 335 000 lbf)
Arm Crowd Force* (ISO 6015:2006)	1 310 kN (134 000 kgf, 294 000 lbf)

*The value is a calculated value.



Before using a machine with a satellite communication system or telecommunication system, please make sure that the satellite communication system or telecommunication system complies with local regulations, safety standards and legal requirements. If not so, please make modifications accordingly.

These specifications are subject to change without notice. Illustrations and photos show the standard models, and may or may not include optional equipment, accessories, and all standard equipment with some differences in color and features. Before use, read and understand the Operator's Manual for proper operation.